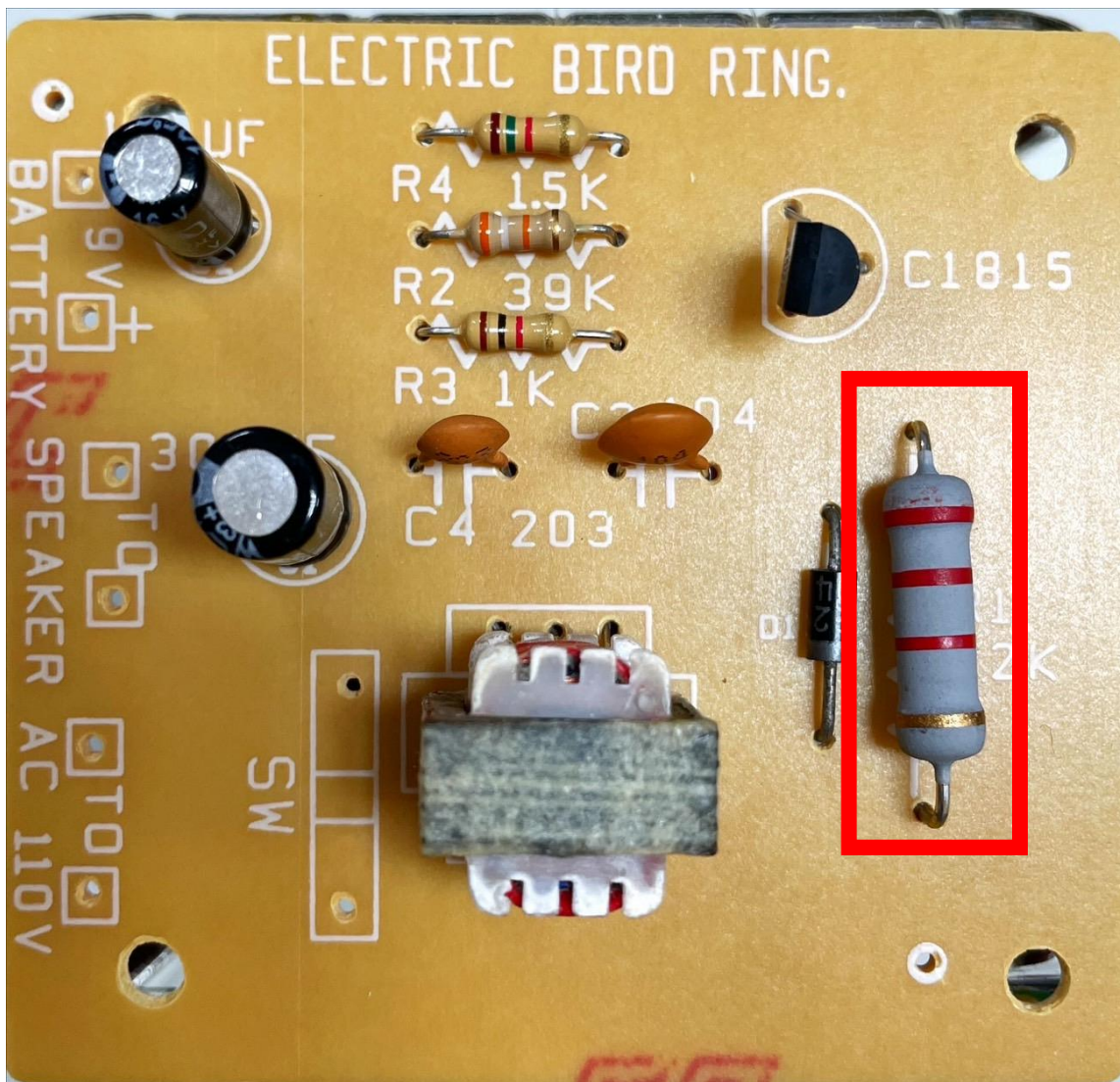
The background is a white canvas decorated with various watercolor-style elements. There are several large, overlapping circles in shades of teal, yellow, and orange. Interspersed among these are smaller, five-pointed stars in yellow and orange, some with radiating lines. There are also some black, brushstroke-like marks scattered around the composition.

建興國中參訪

成大南工電子科歡迎您

課程教師：洪廷欣、郭嘉峻

主題：電子門鈴(鳥鳴聲)



電阻R1(2.2KΩ)
紅紅紅金



主題：電子門鈴(鳥鳴聲)



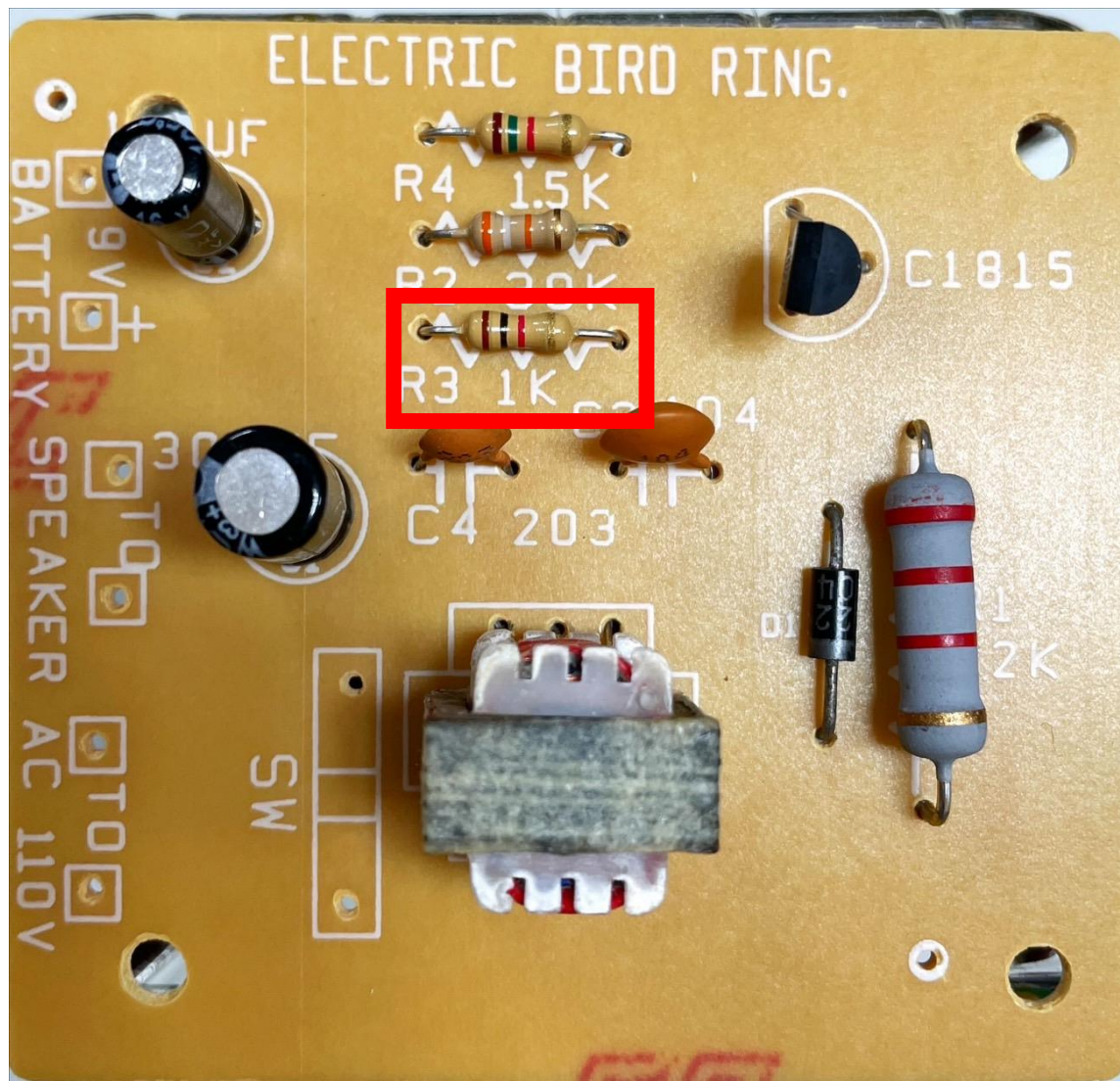
電阻R2(3.9KΩ)
橙白橙金



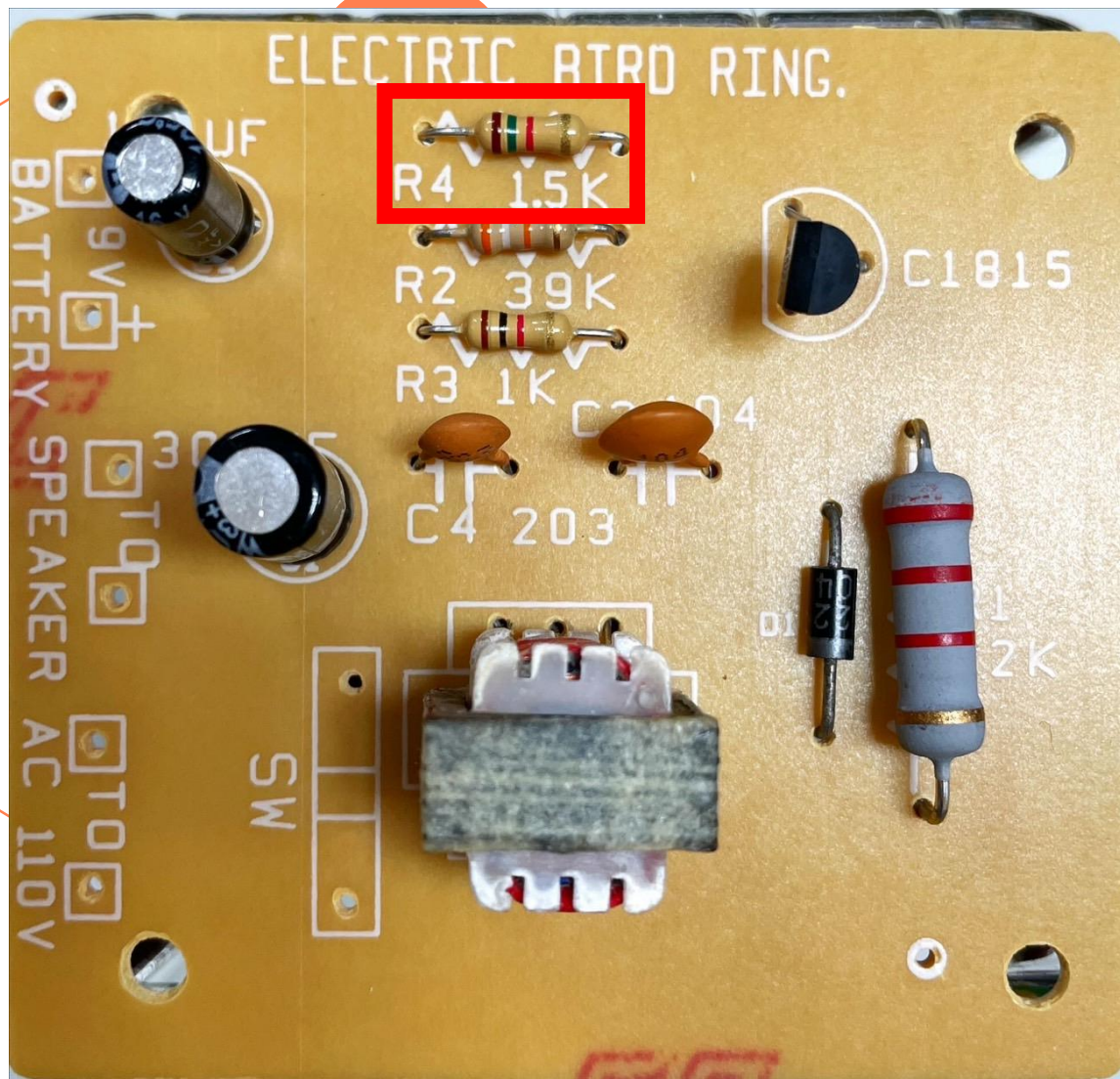
主題：電子門鈴(鳥鳴聲)



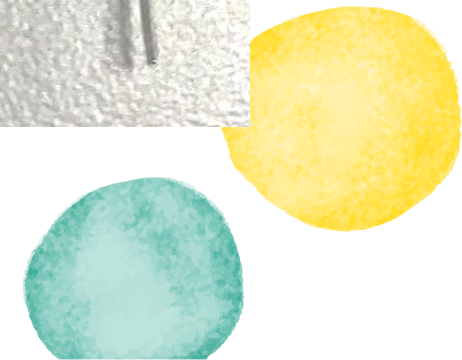
電阻R3(1KΩ)
棕黑紅金



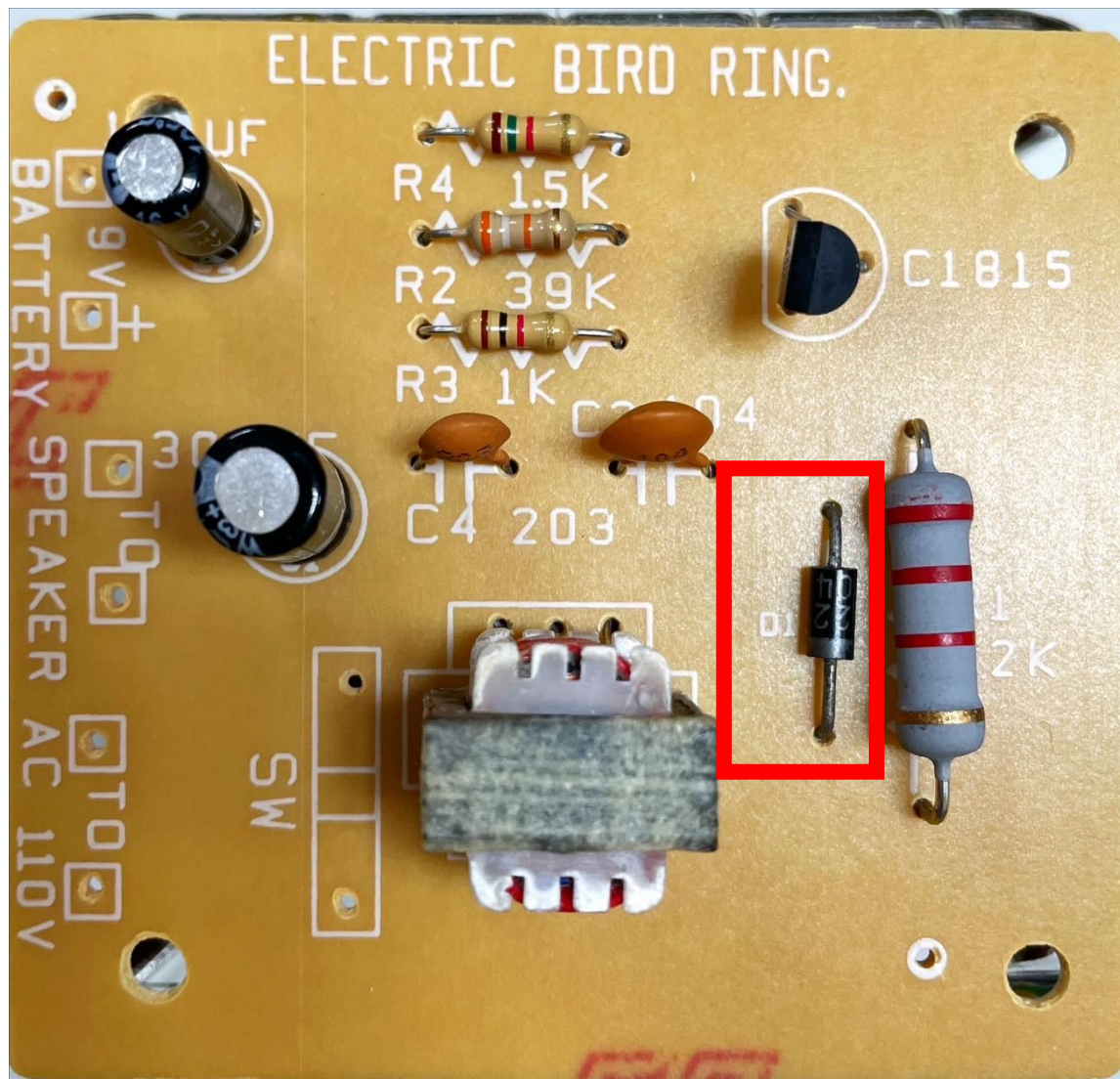
主題：電子門鈴(鳥鳴聲)



電阻R4(1.5K Ω)
棕綠紅金



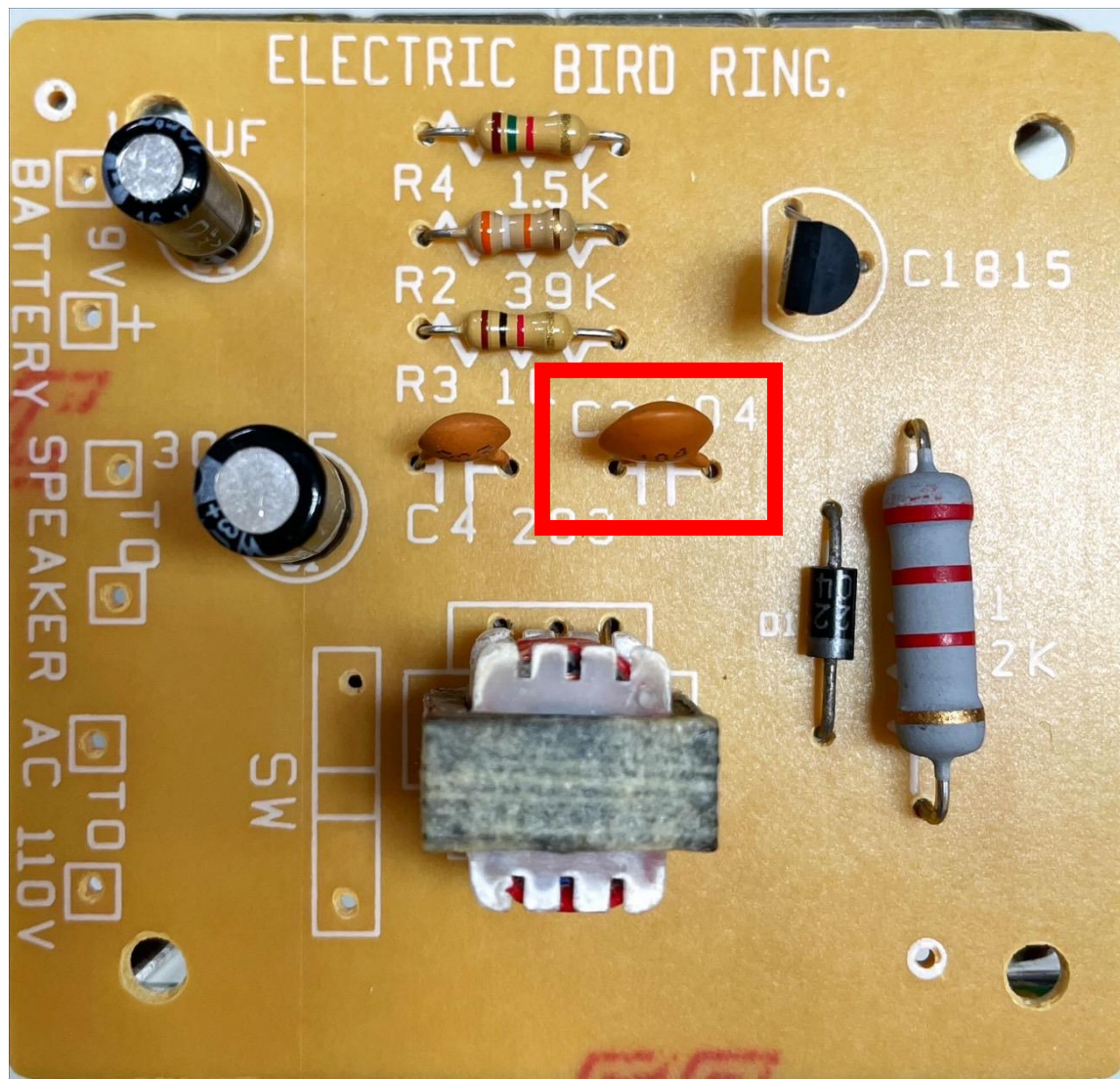
主題：電子門鈴(鳥鳴聲)



二極體 (1N4001)



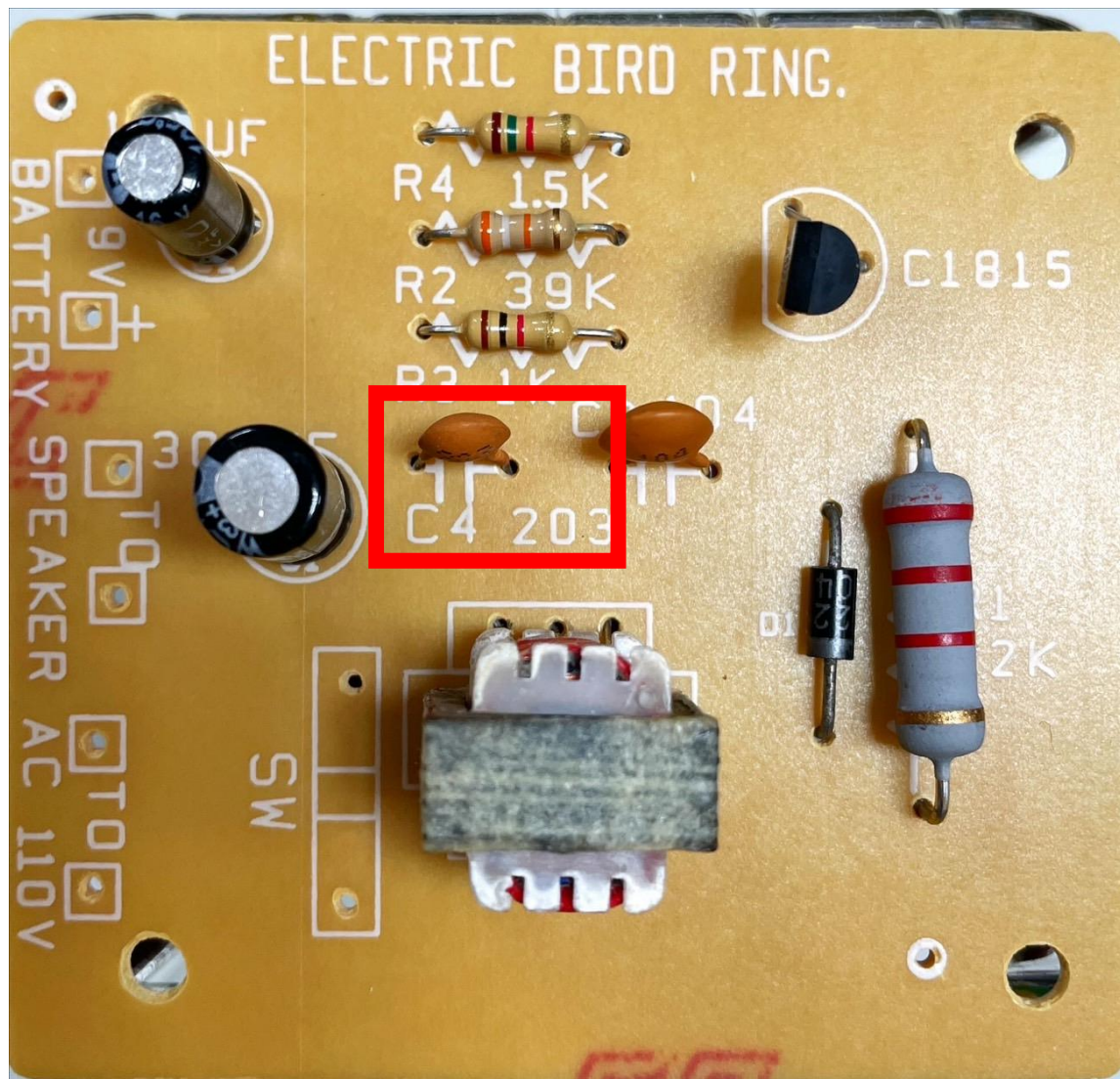
主題：電子門鈴(鳥鳴聲)



陶瓷電容C3
(104)



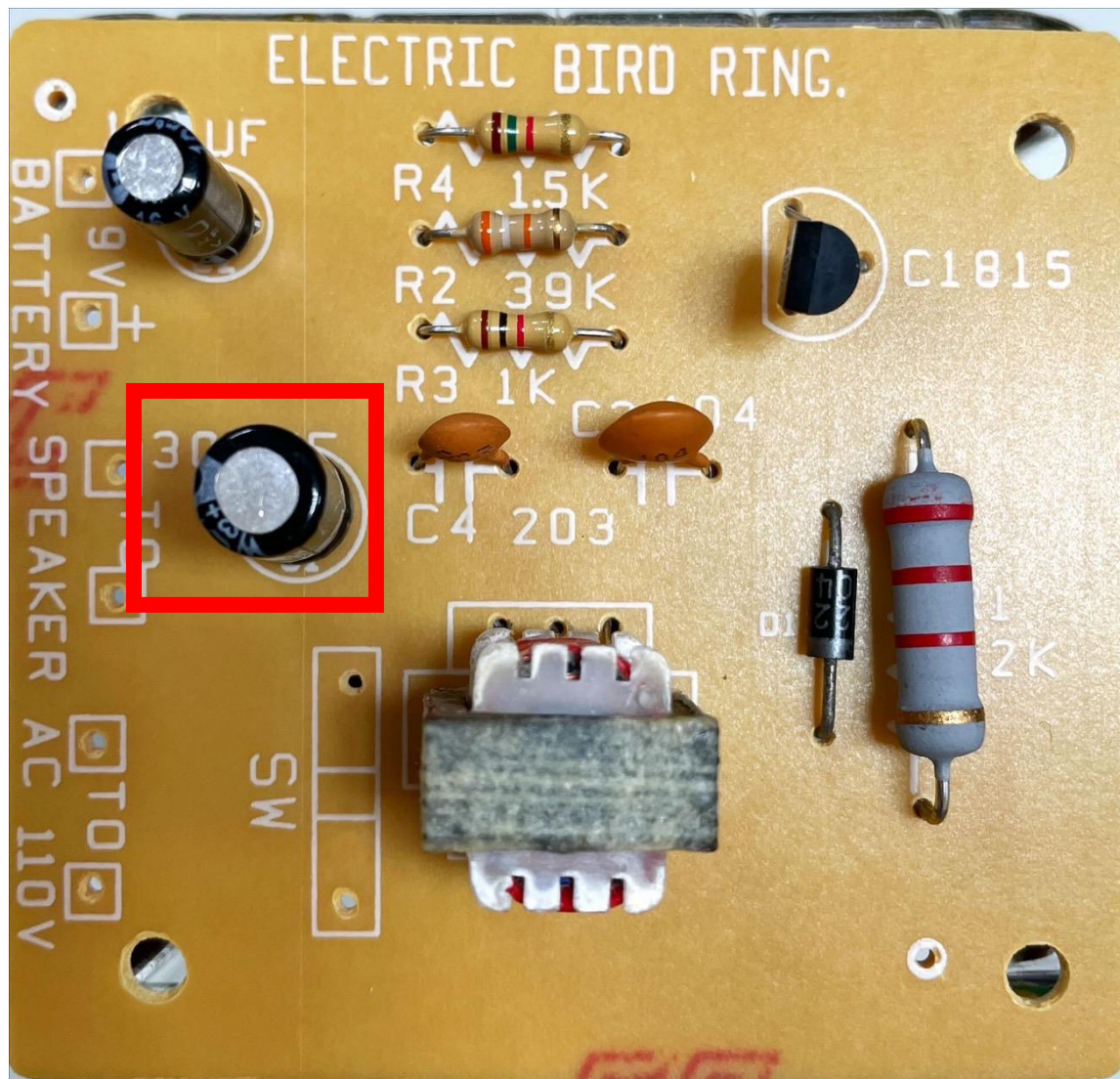
主題：電子門鈴(鳥鳴聲)



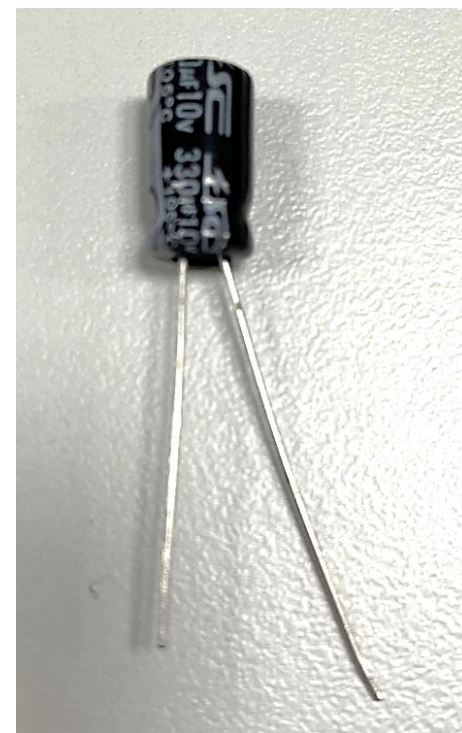
陶瓷電容C4
(203)



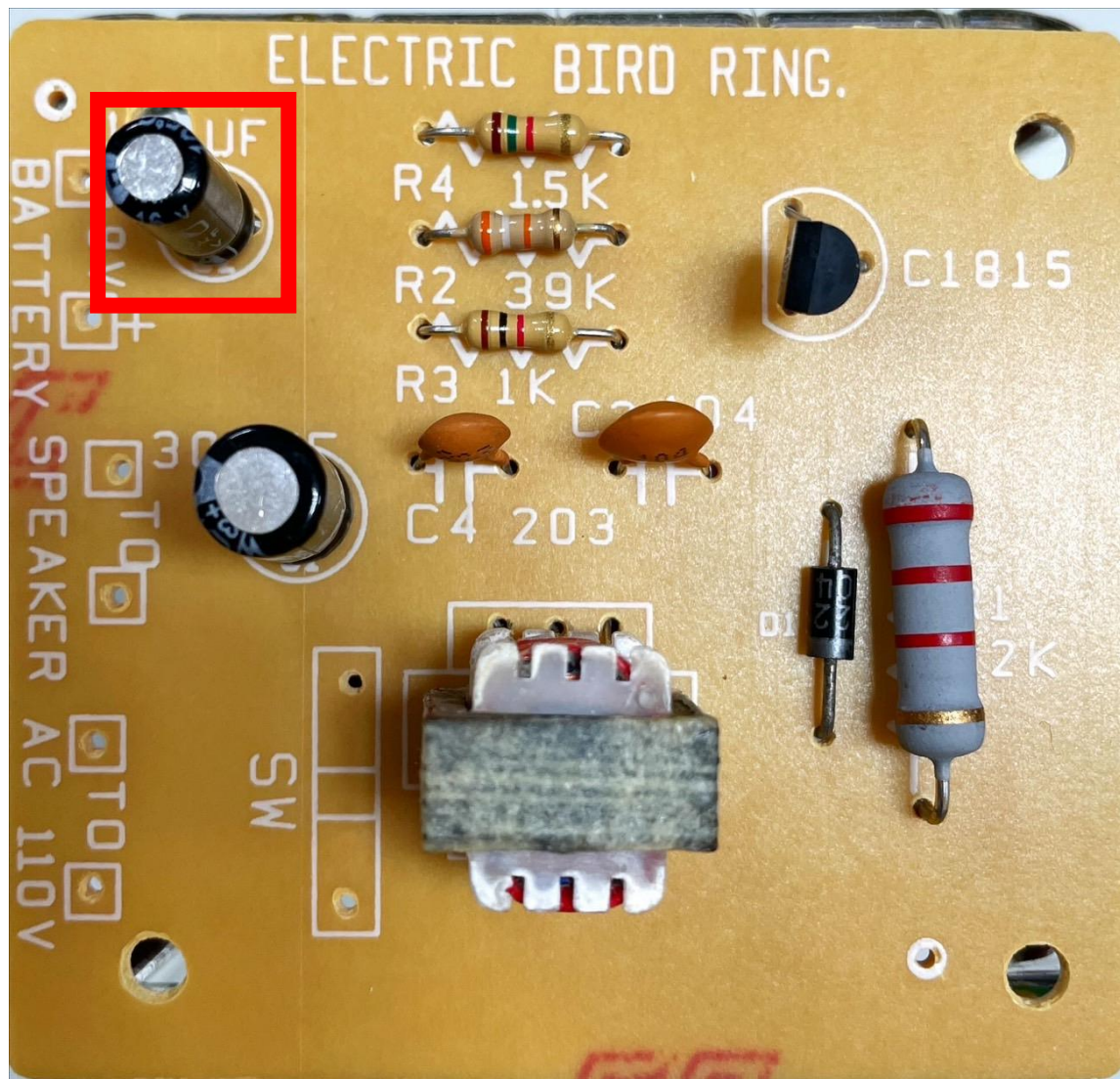
主題：電子門鈴(鳥鳴聲)



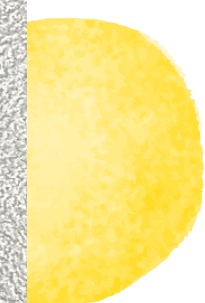
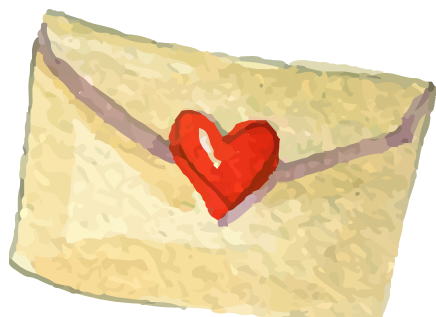
電解電容C1
(330 μ F)
長腳是正



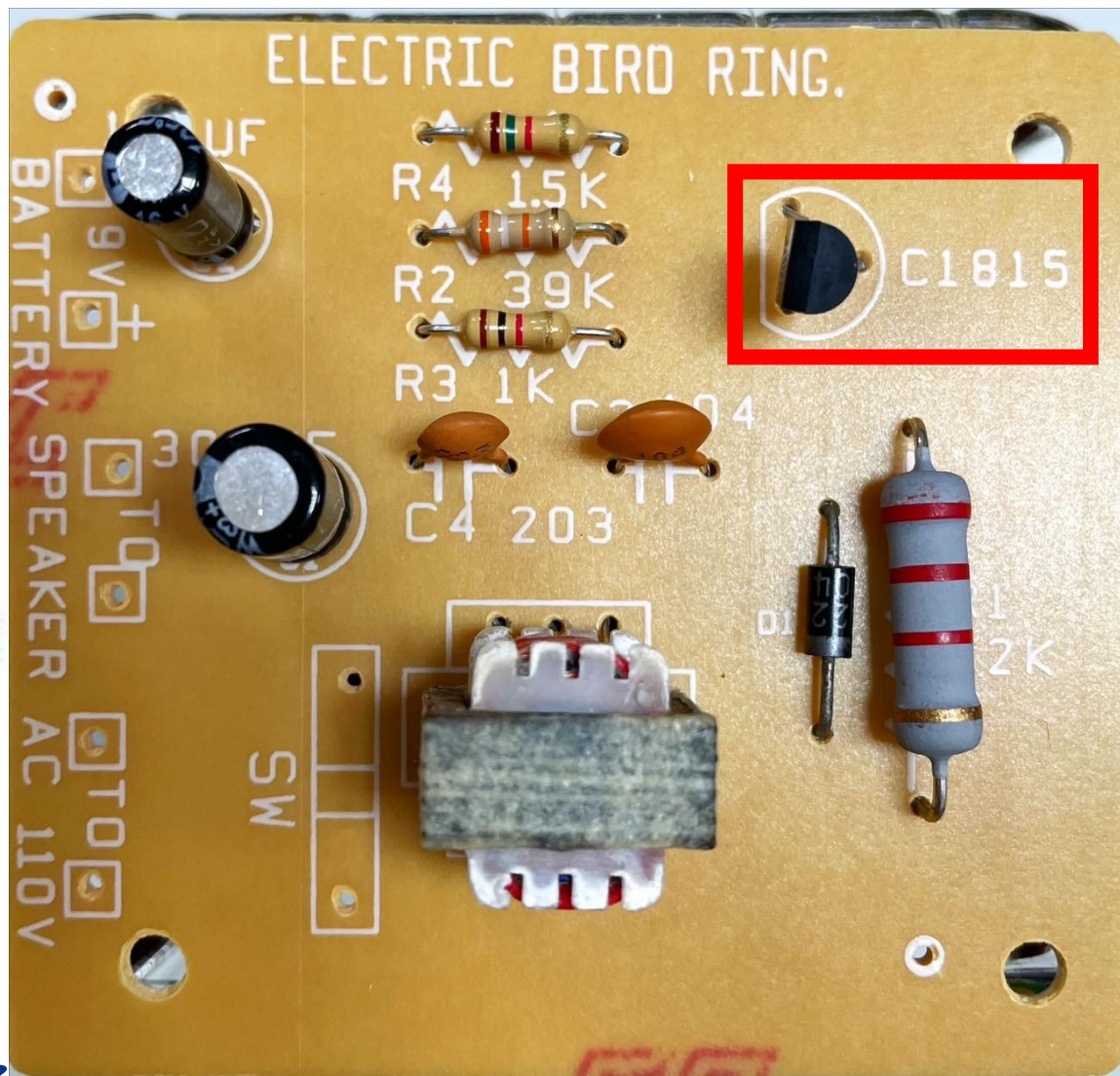
主題：電子門鈴(鳥鳴聲)



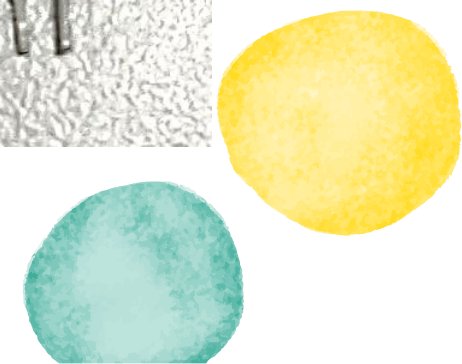
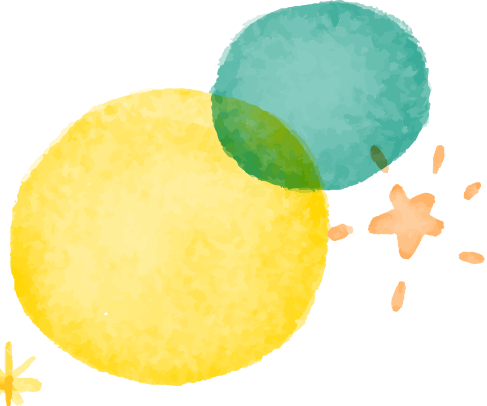
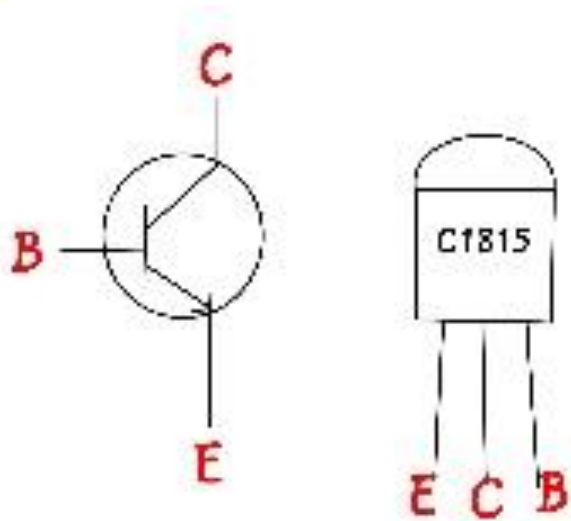
電解電容C2
(100 μ F)
長腳是正



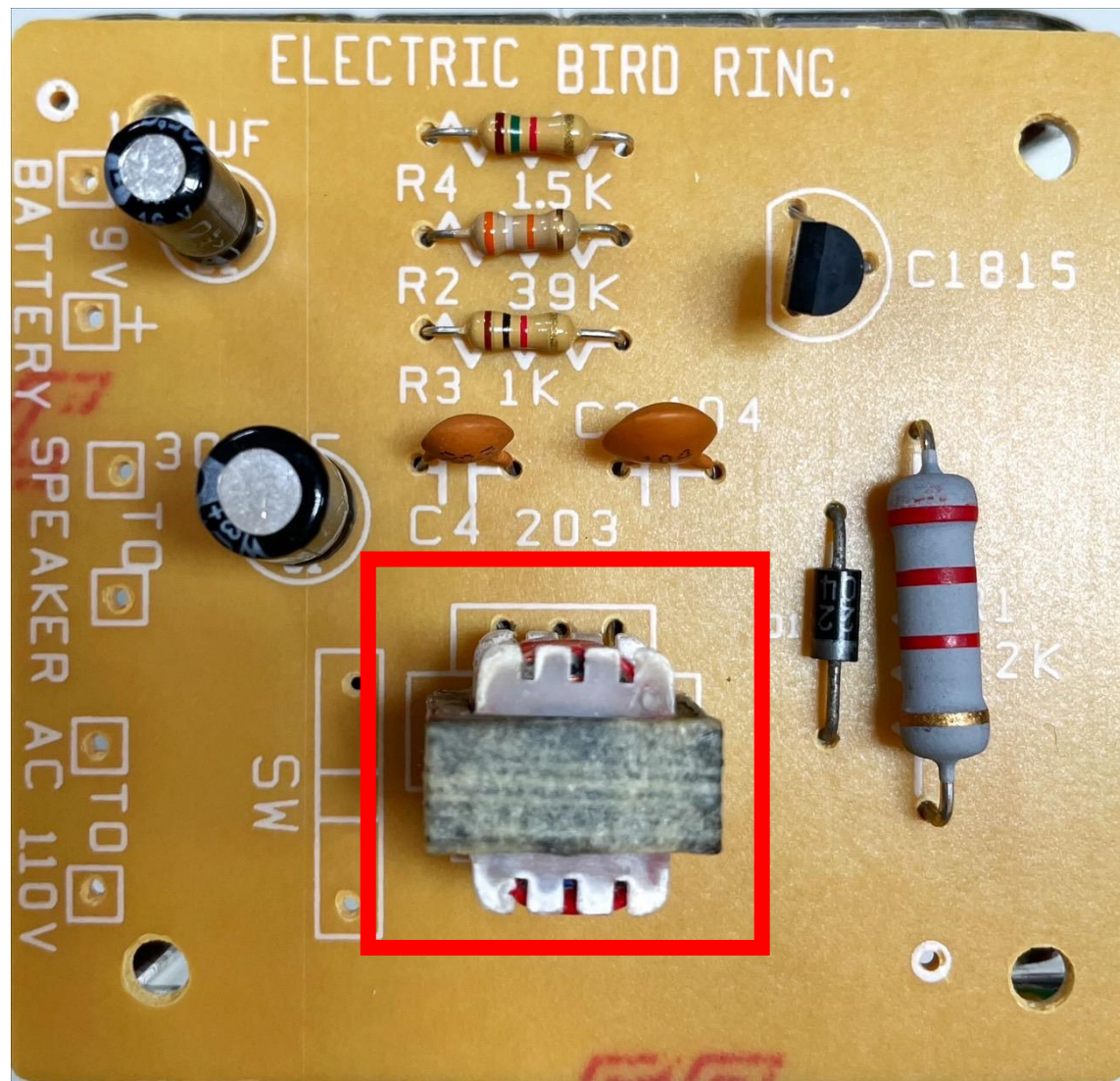
主題：電子門鈴(鳥鳴聲)



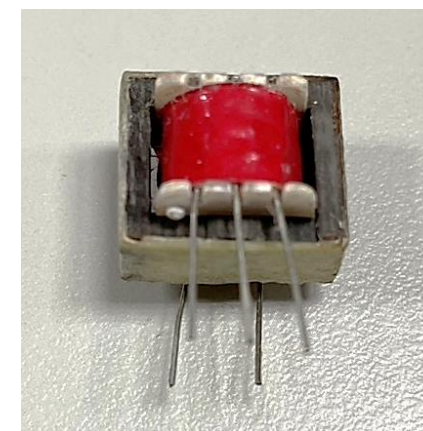
電晶體Q1
(1815)



主題：電子門鈴(鳥鳴聲)



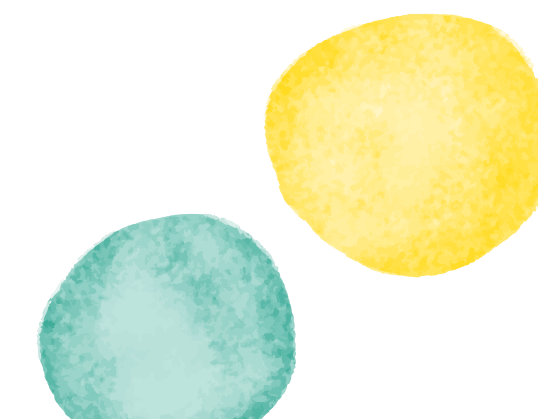
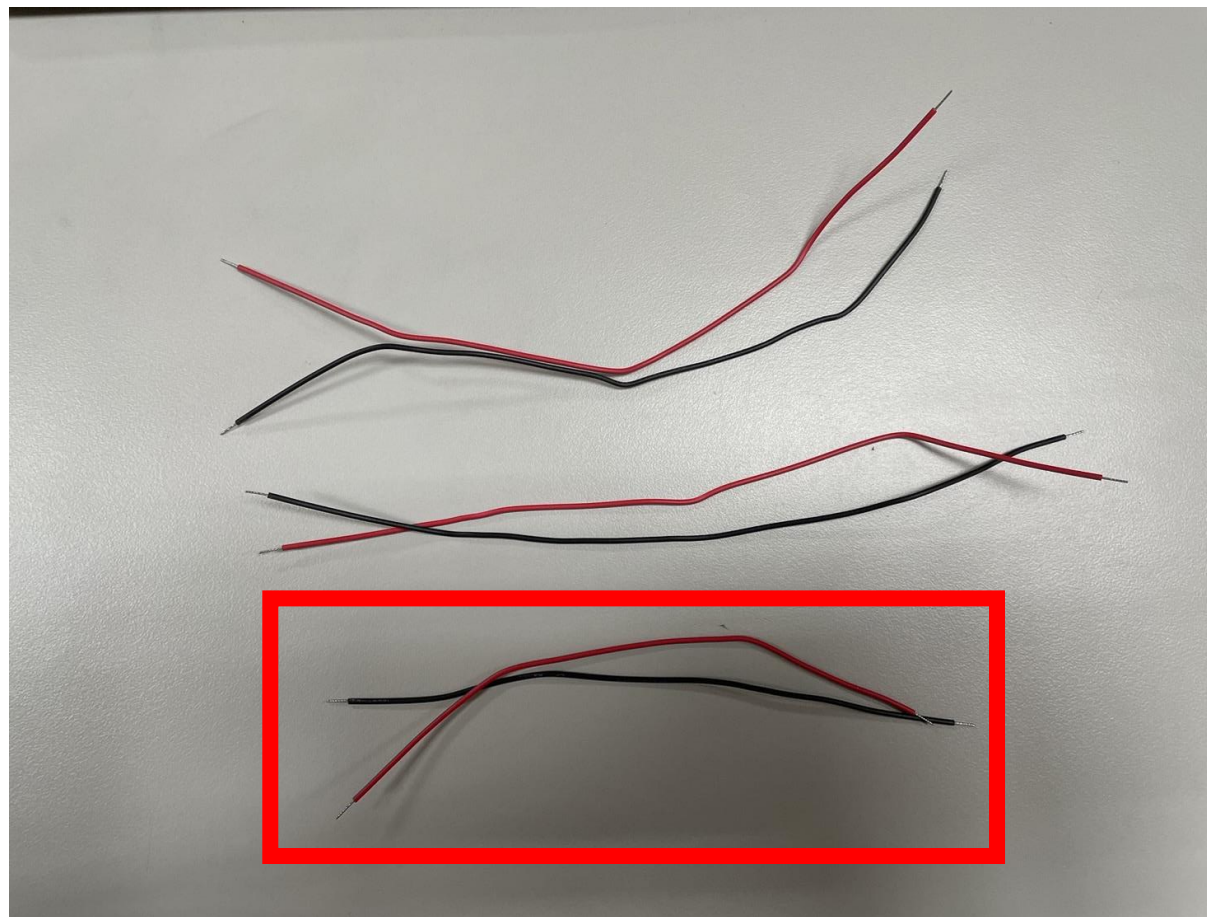
輸出變壓器 (OPT)



主題：電子門鈴(鳥鳴聲)

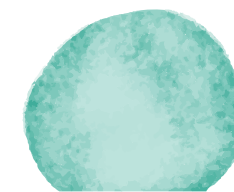
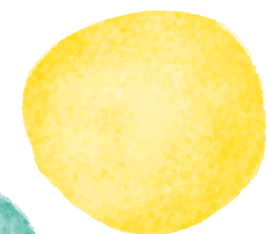
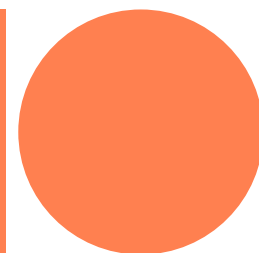
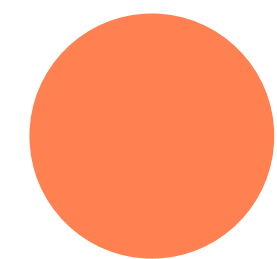
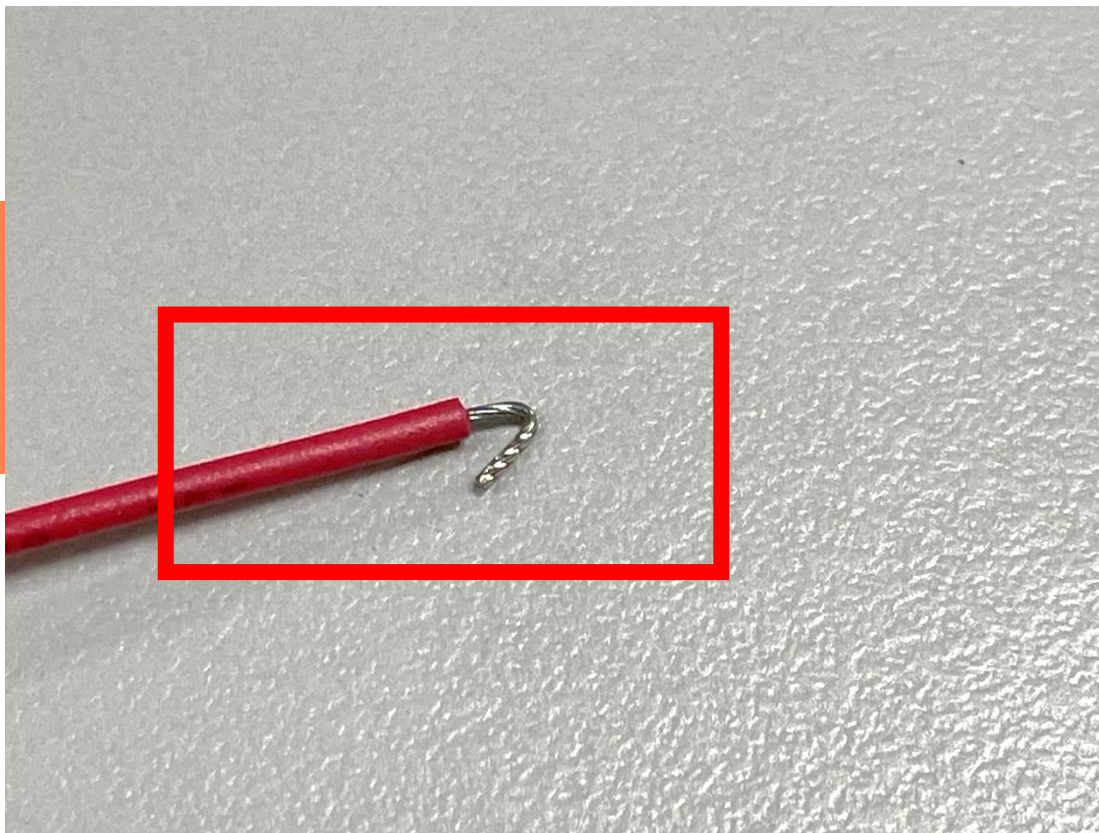


單芯線
短線(紅、黑)
10cm

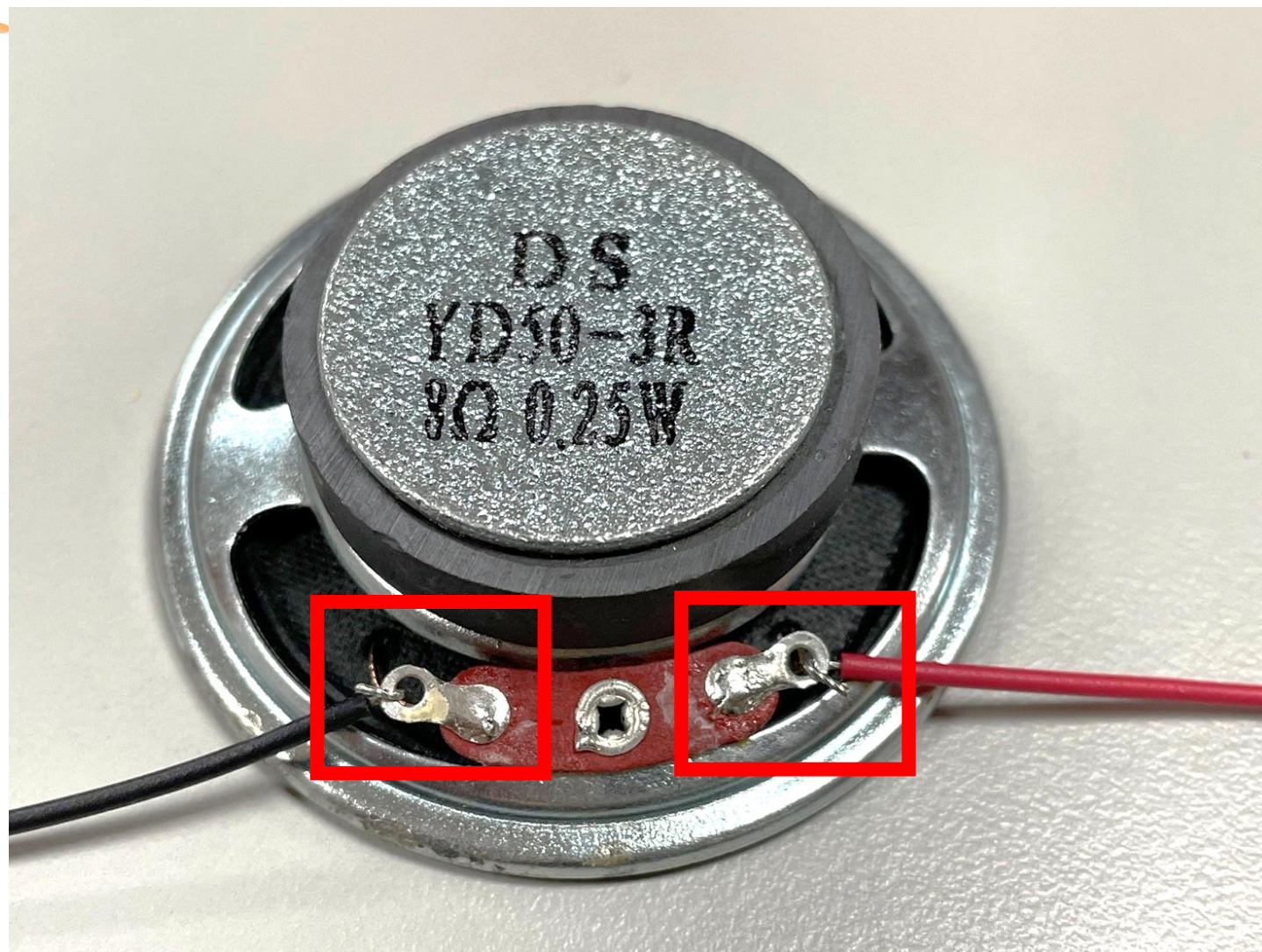


主題：電子門鈴(鳥鳴聲)

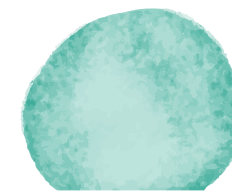
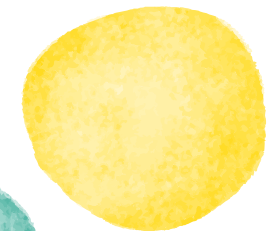
裸露的部分
摺成鉤子狀



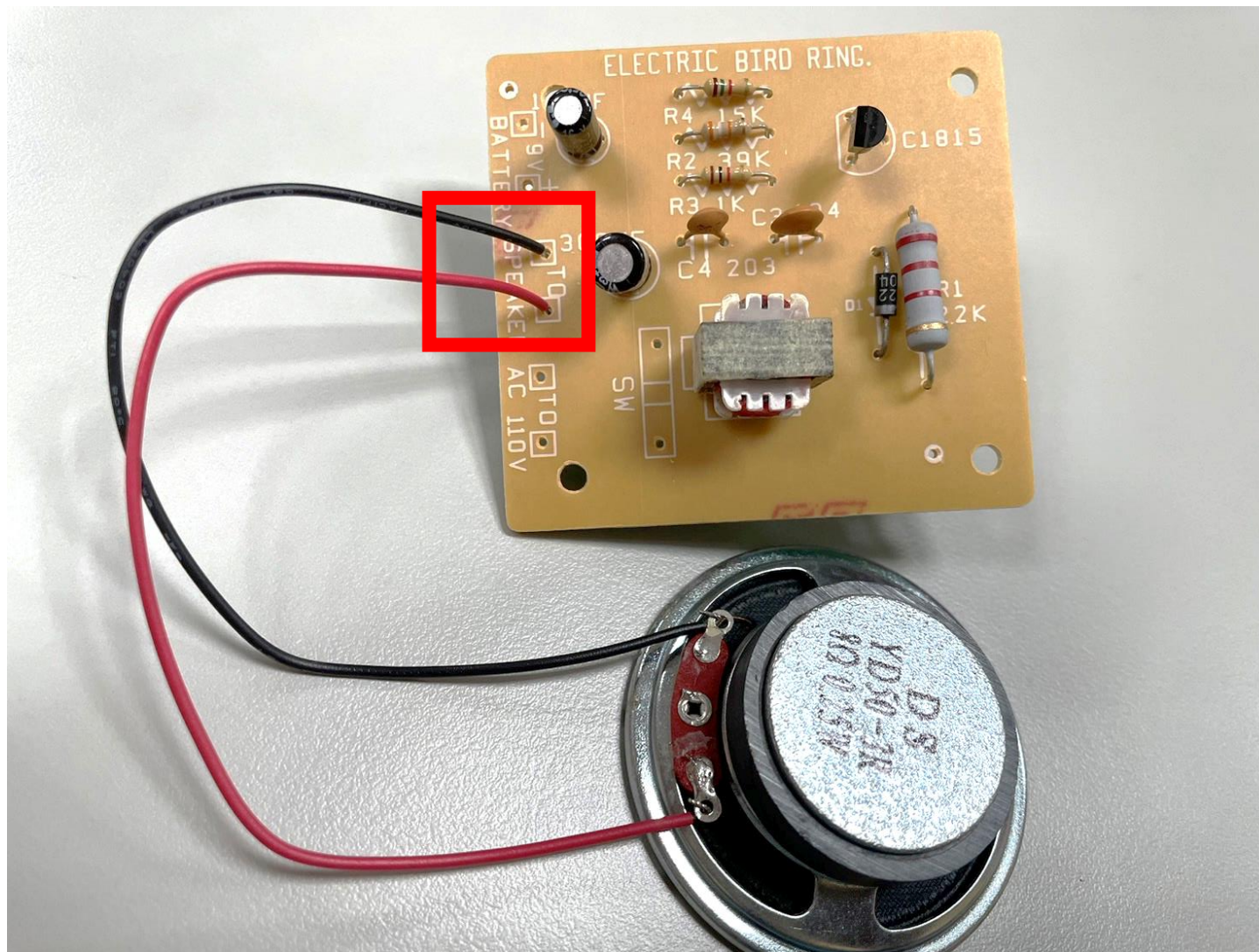
主題：電子門鈴(鳥鳴聲)



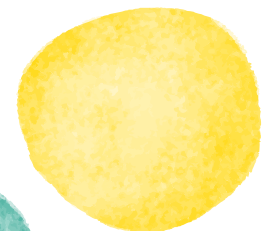
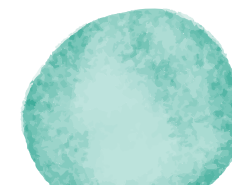
喇叭
焊接黏起來
(左黑線)
(右紅線)



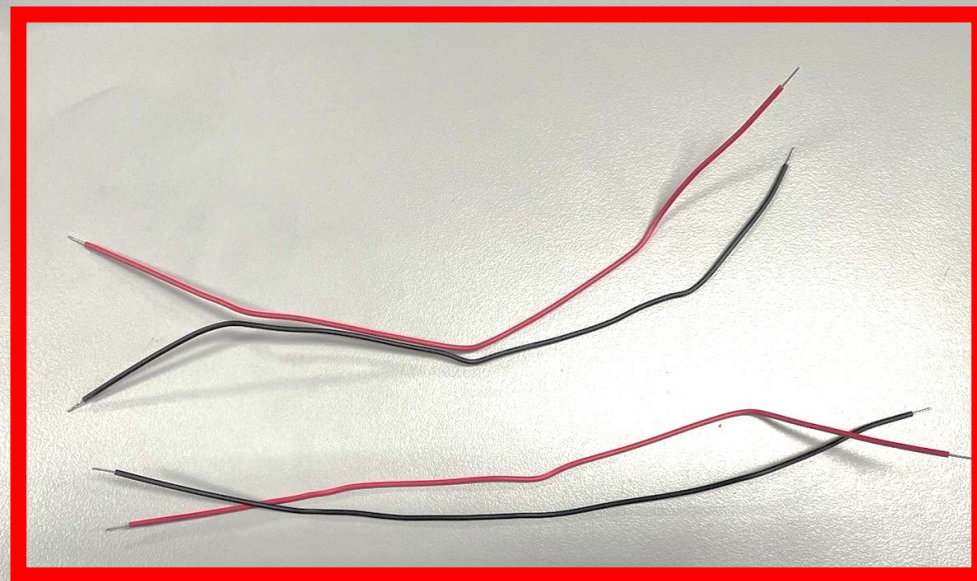
主題：電子門鈴(鳥鳴聲)



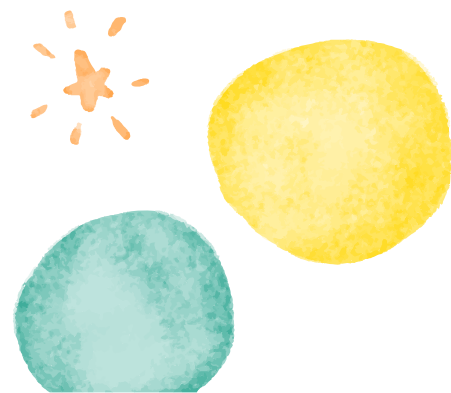
喇叭接線端
焊接至板子
(上黑線)
(下紅線)



主題：電子門鈴(鳥鳴聲)

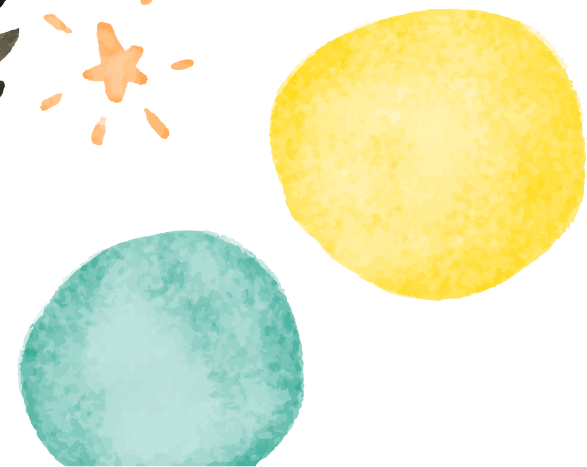
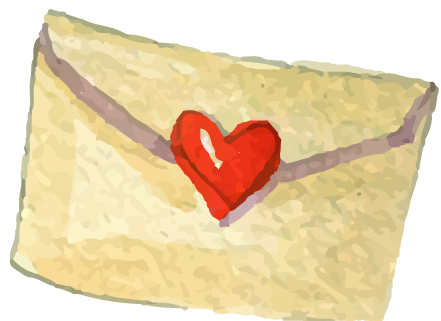
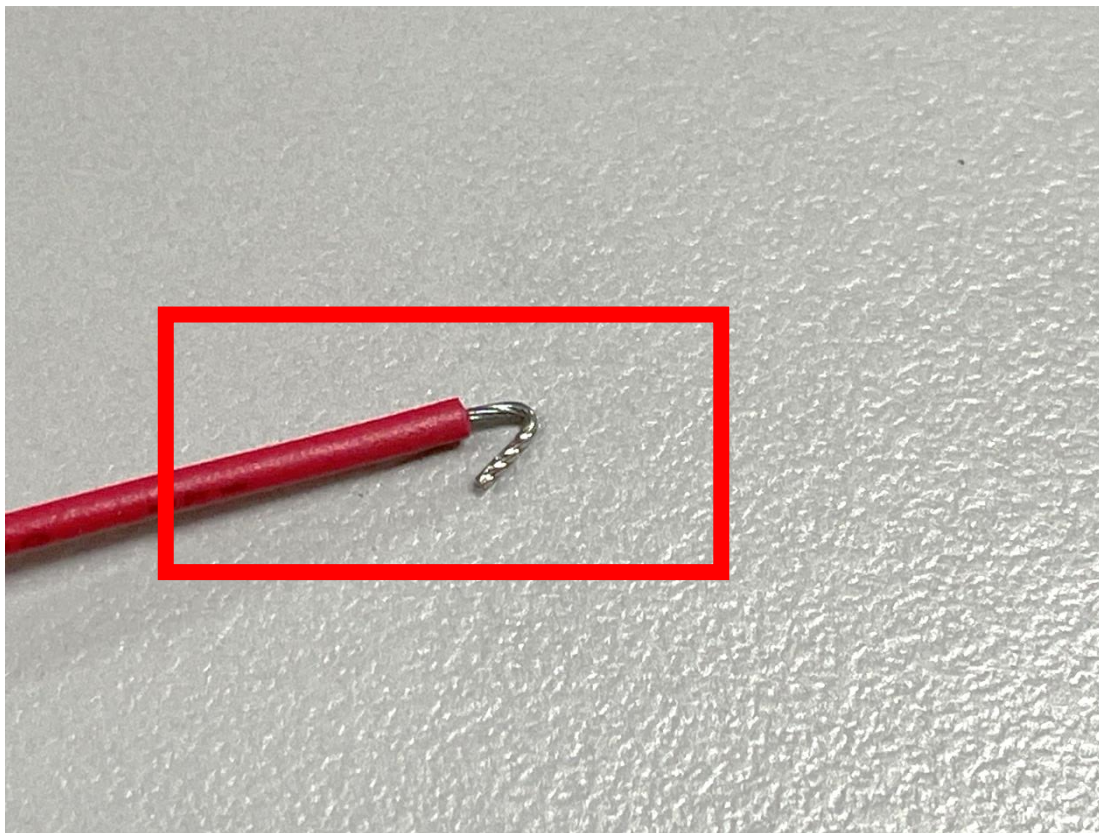


長線(紅、黑)
20cm



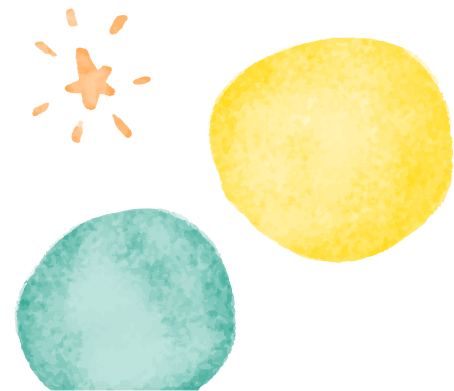
主題：電子門鈴(鳥鳴聲)

摺成鉤子狀



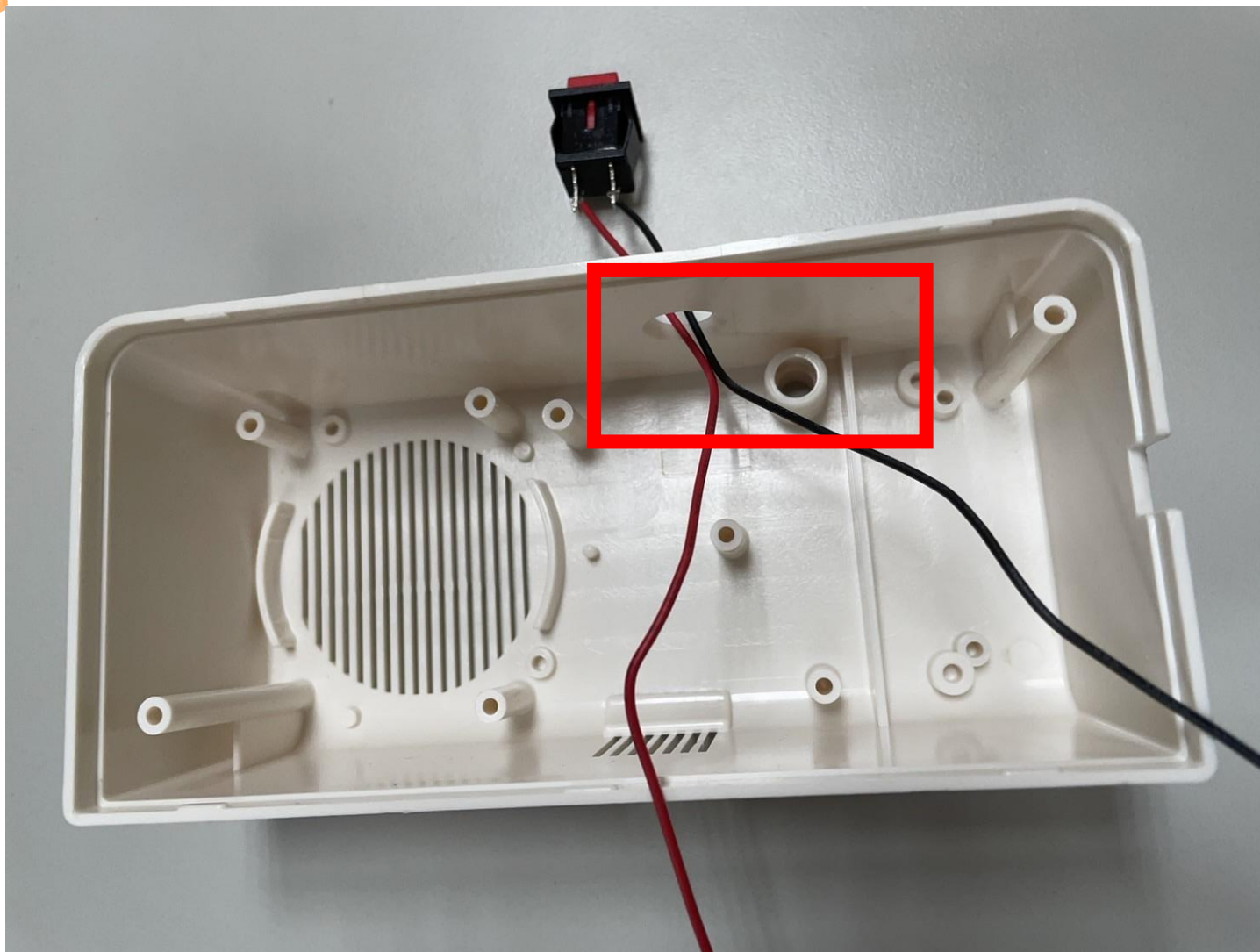
主題：電子門鈴(鳥鳴聲)

彈跳開關
焊接黏起來
(一紅一黑)



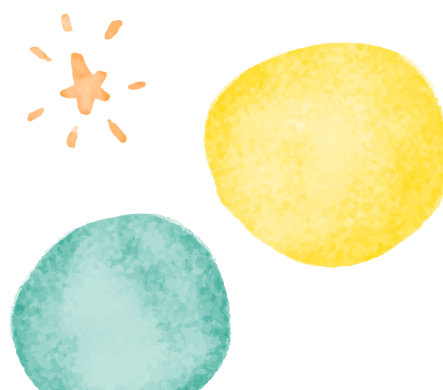
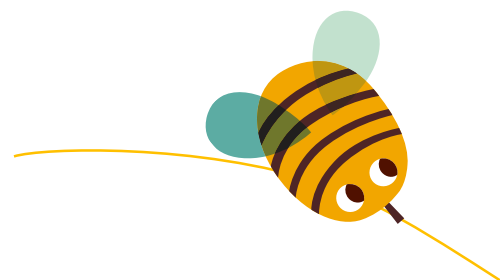
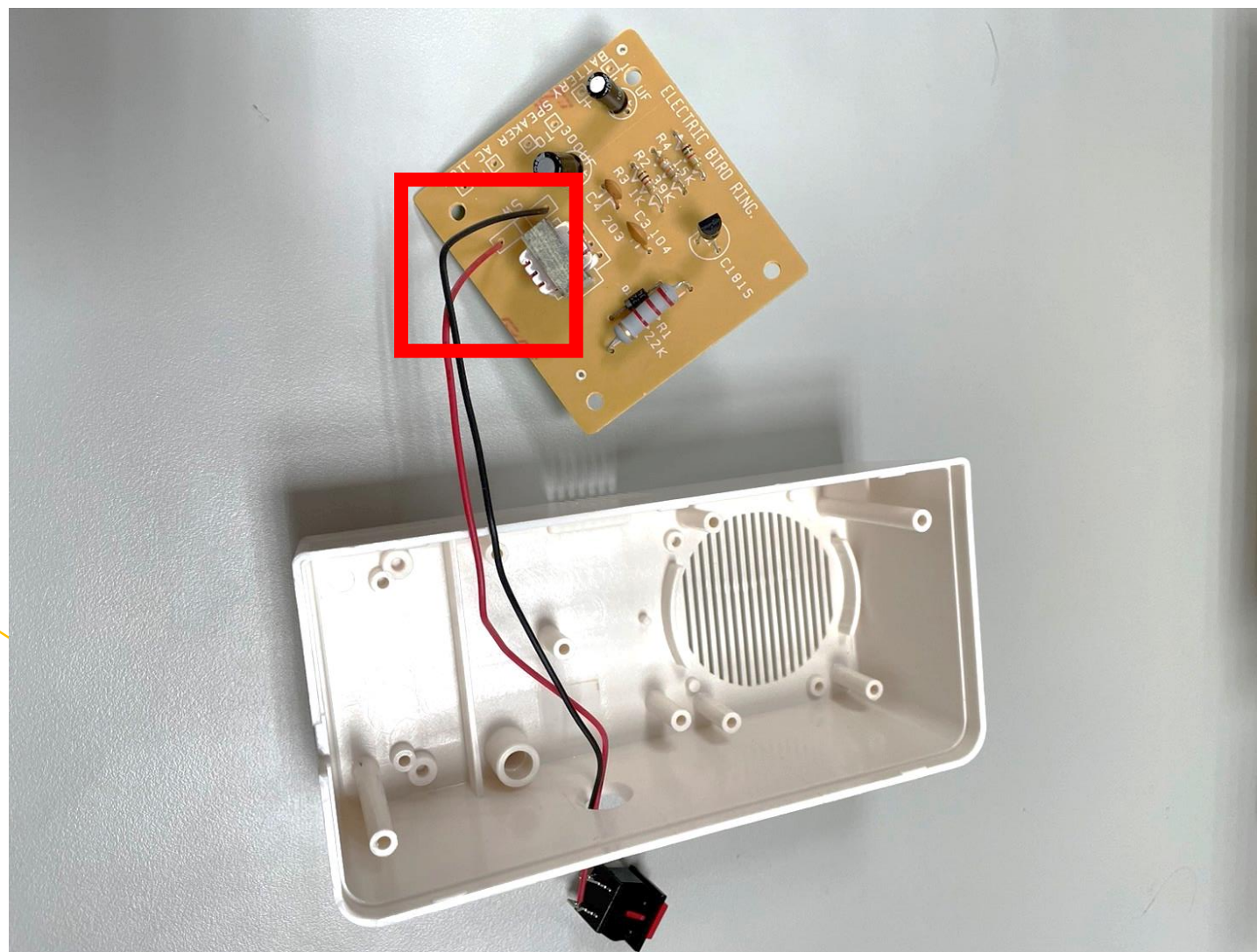
主題：電子門鈴(鳥鳴聲)

重要！
彈跳開關
紅黑線穿過盒子



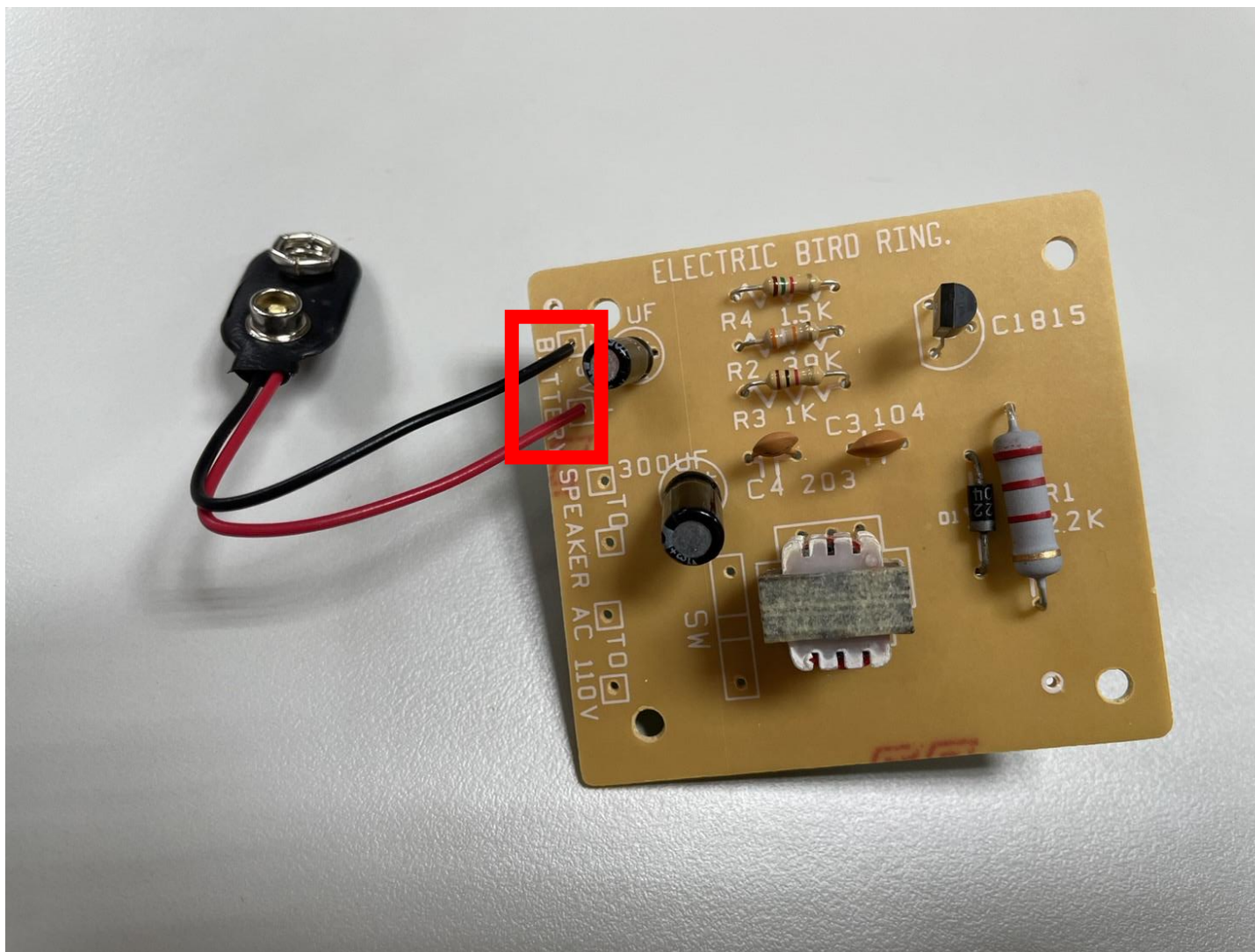
主題：電子門鈴(鳥鳴聲)

彈跳開關
焊接至板子
(上黑線)
(下紅線)



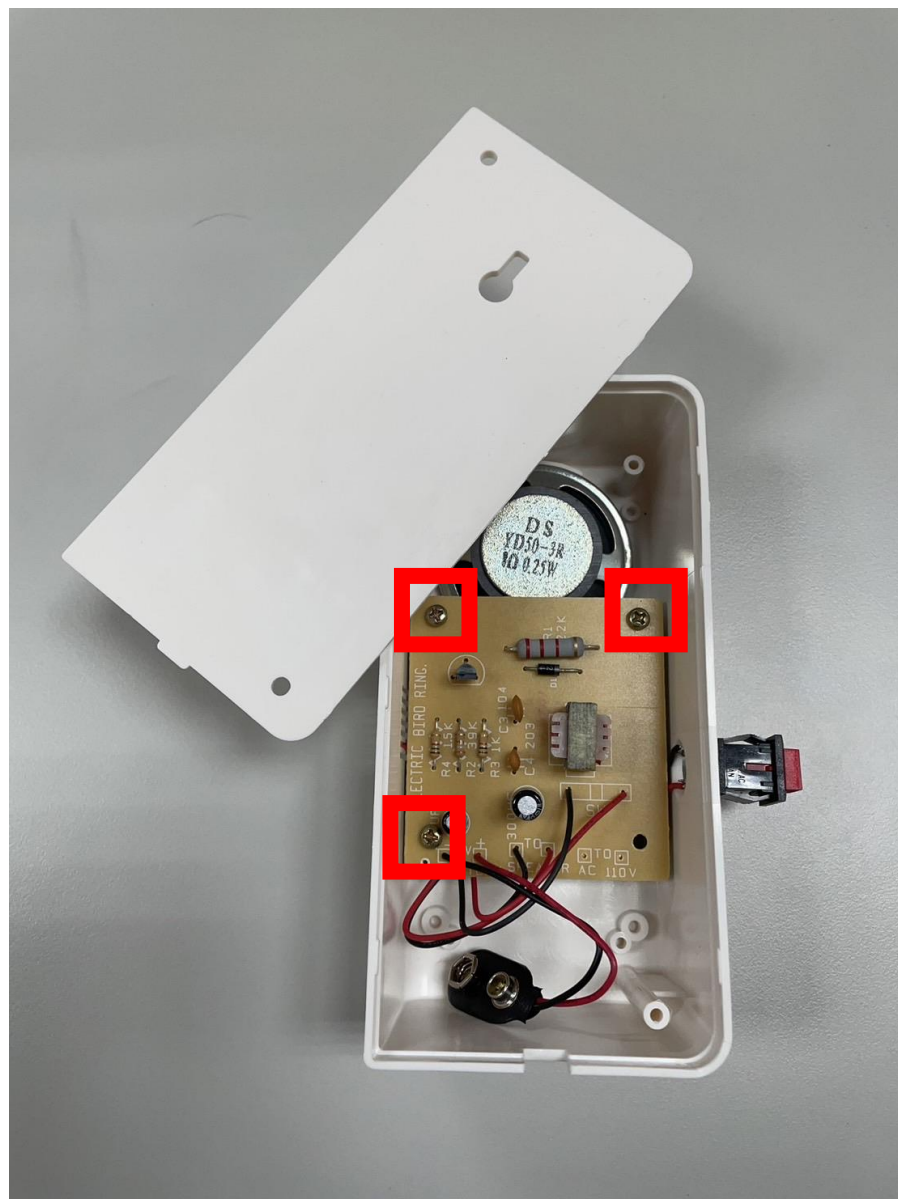
主題：電子門鈴(鳥鳴聲)

電池扣
焊接至板子
(上黑線)
(下紅線)



主題：電子門鈴(鳥鳴聲)

鎖上螺絲
大功告成~





感謝大家的聆聽

THANKS YOU